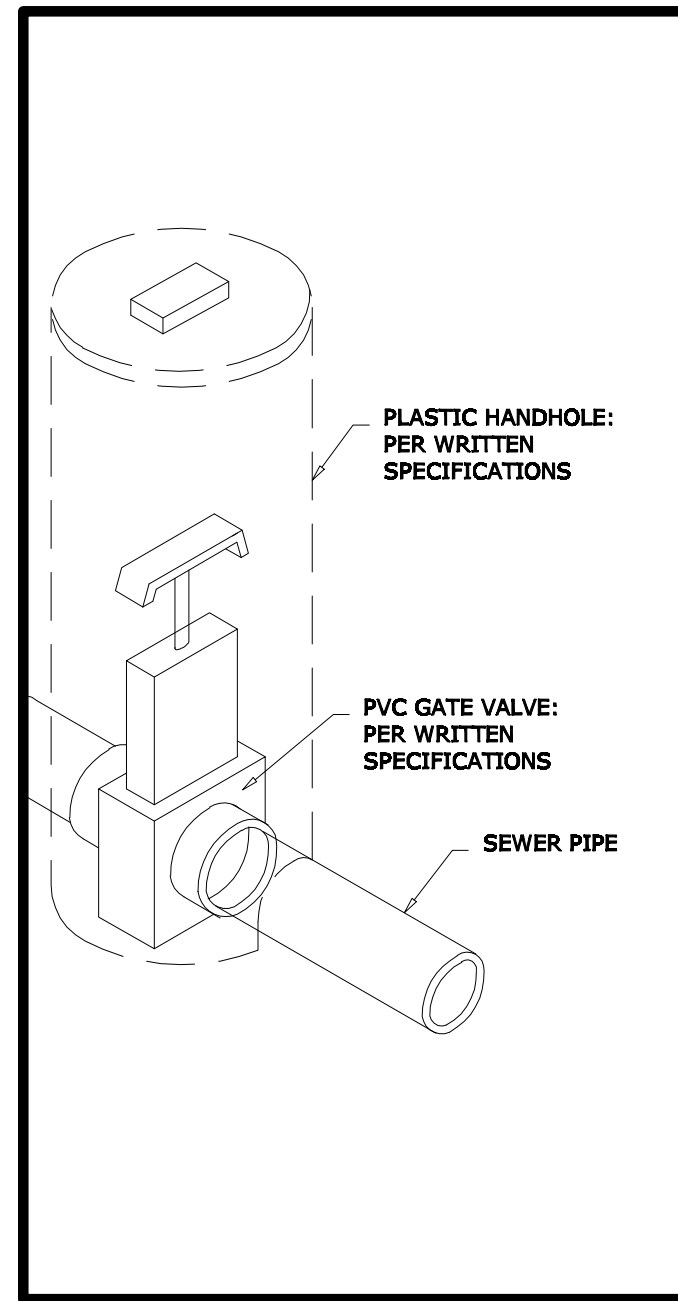
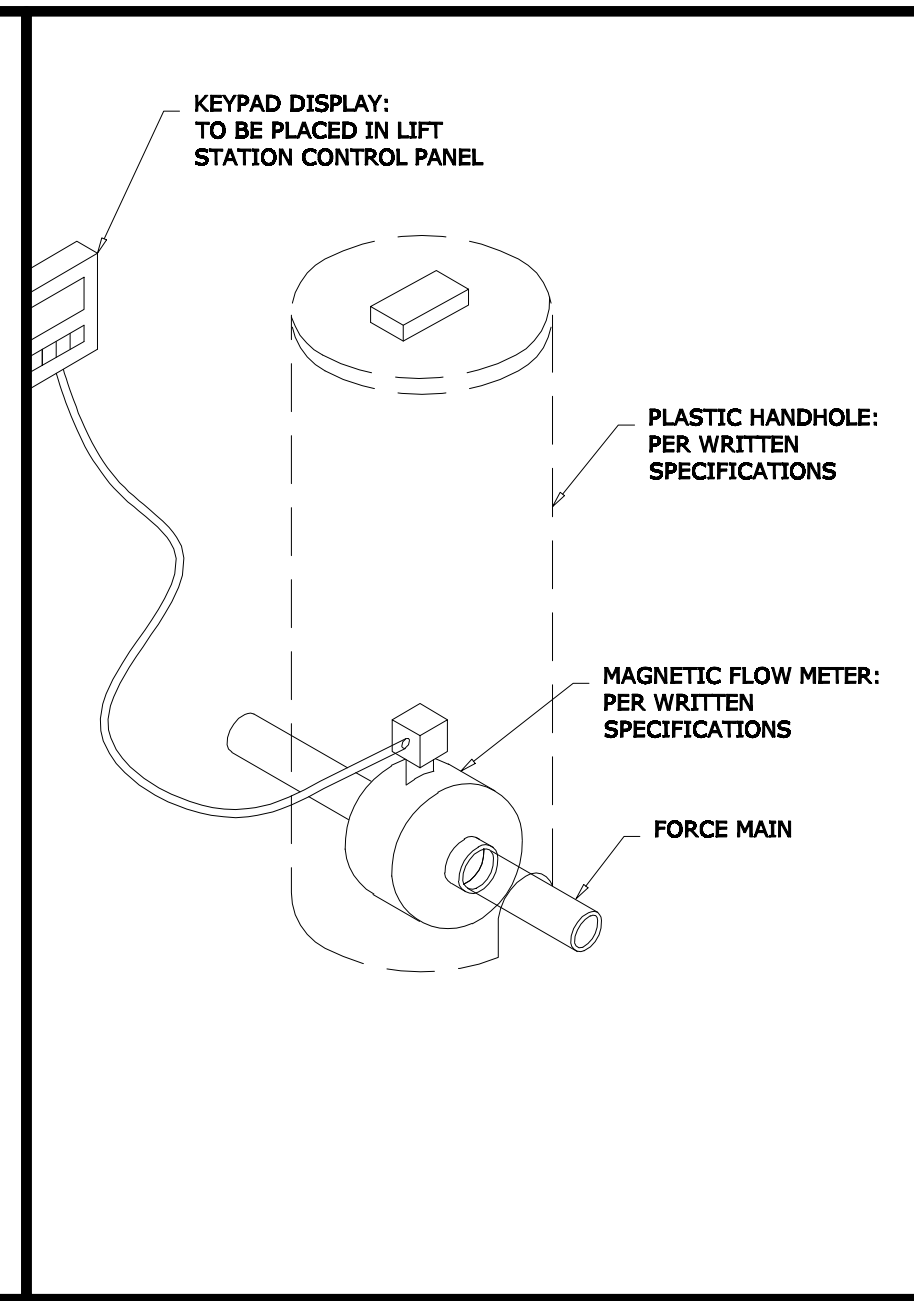


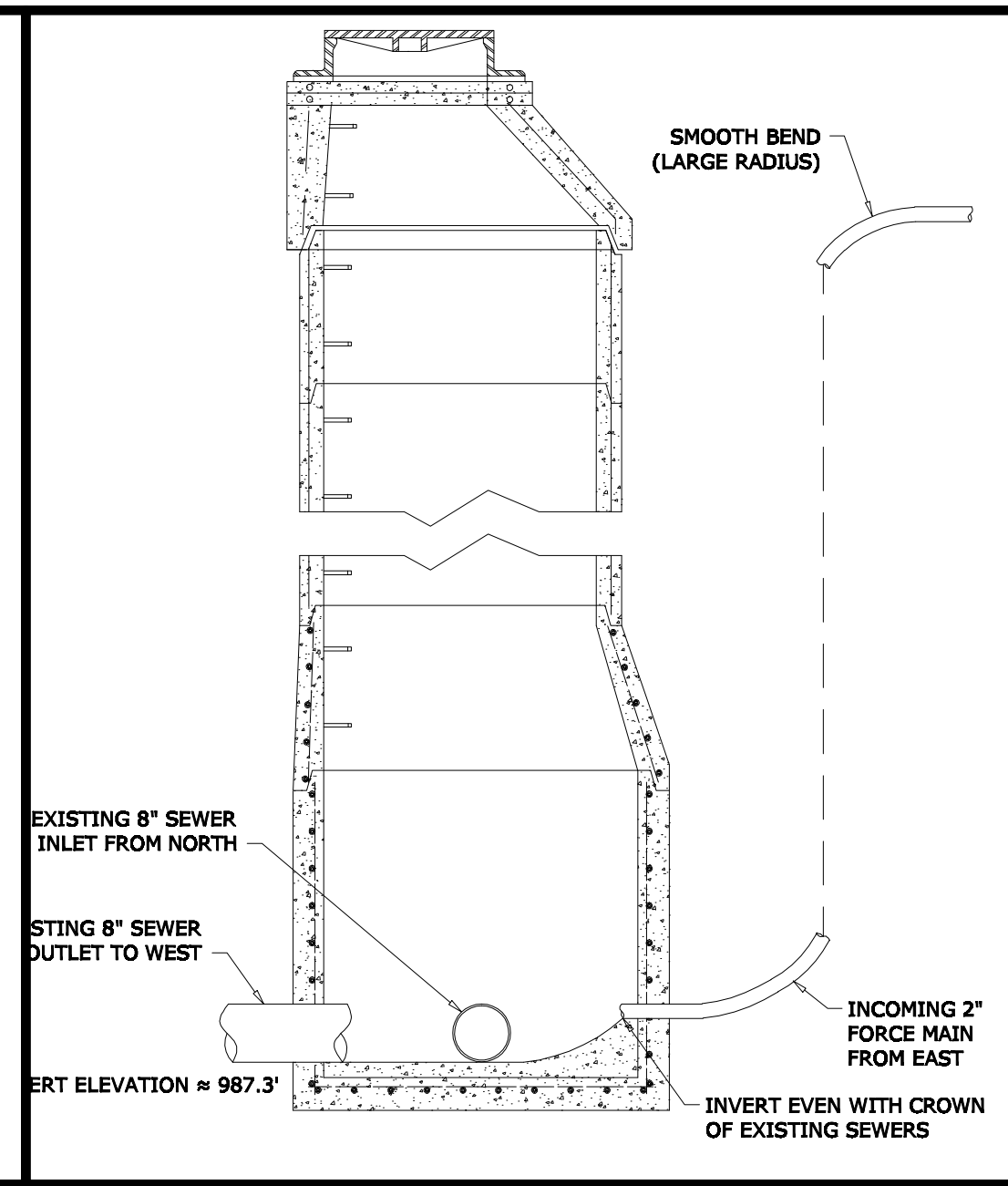
CROSS-SECTIONS AND DETAILS



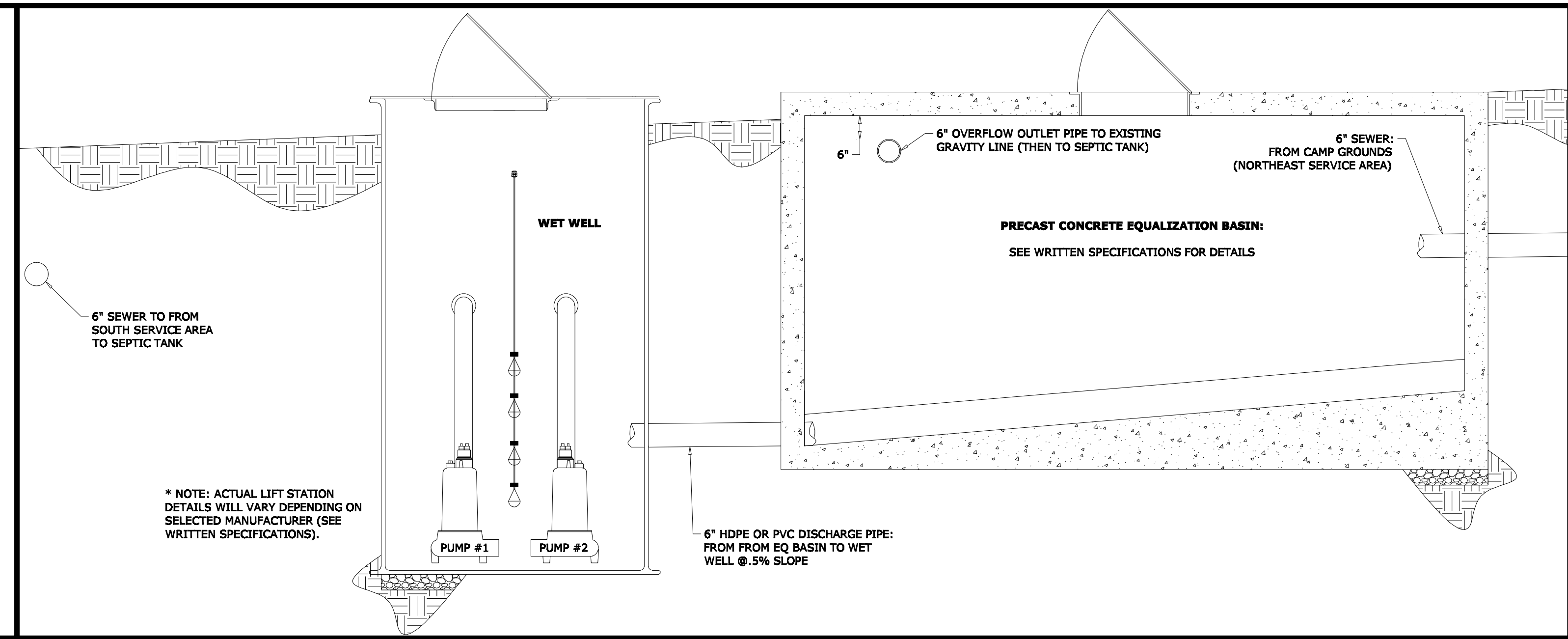
DETAIL A: GATE VALVE
SCALE: 1" = 2'



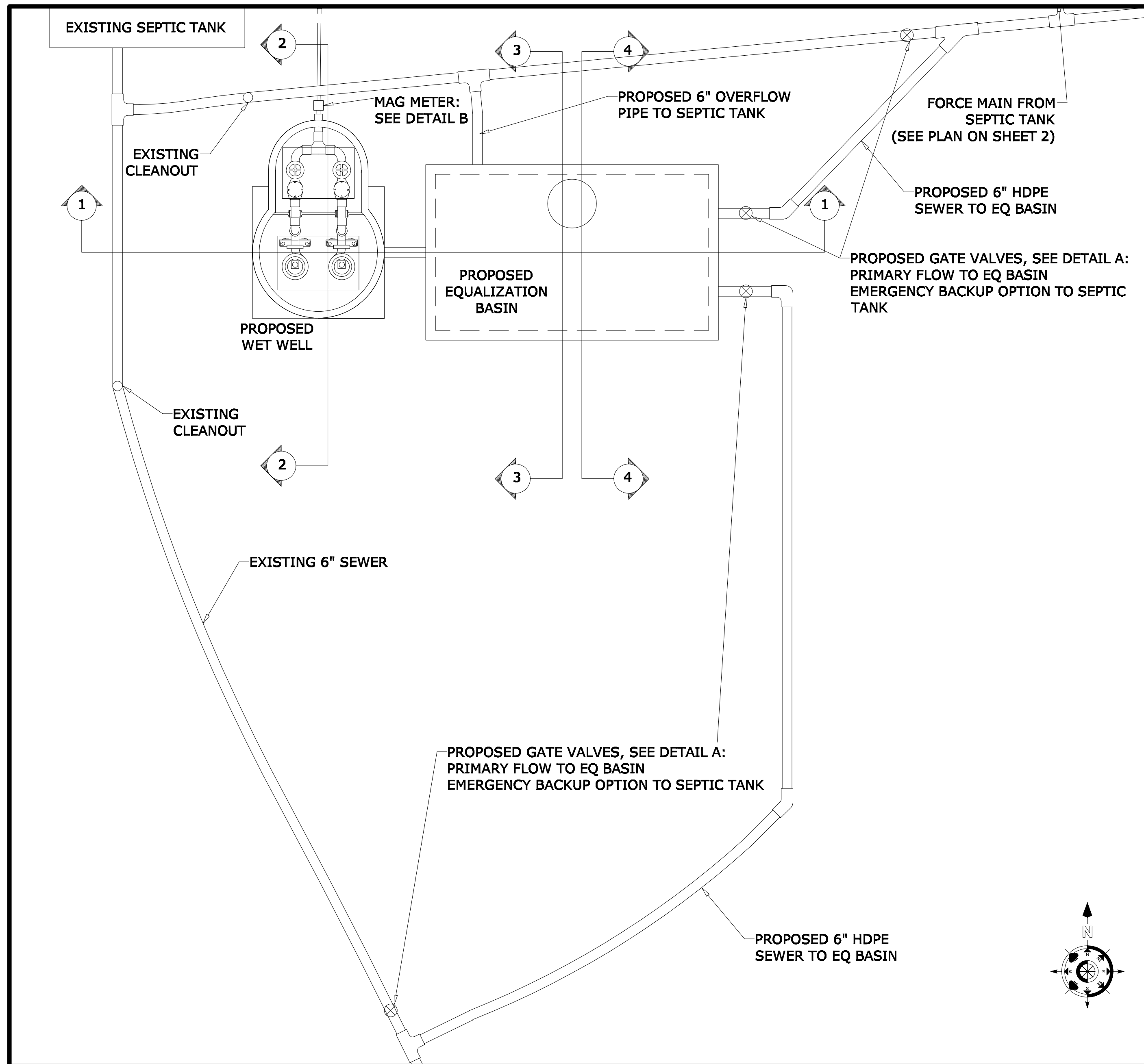
DETAIL B: MAG METER
SCALE: 1" = 2'



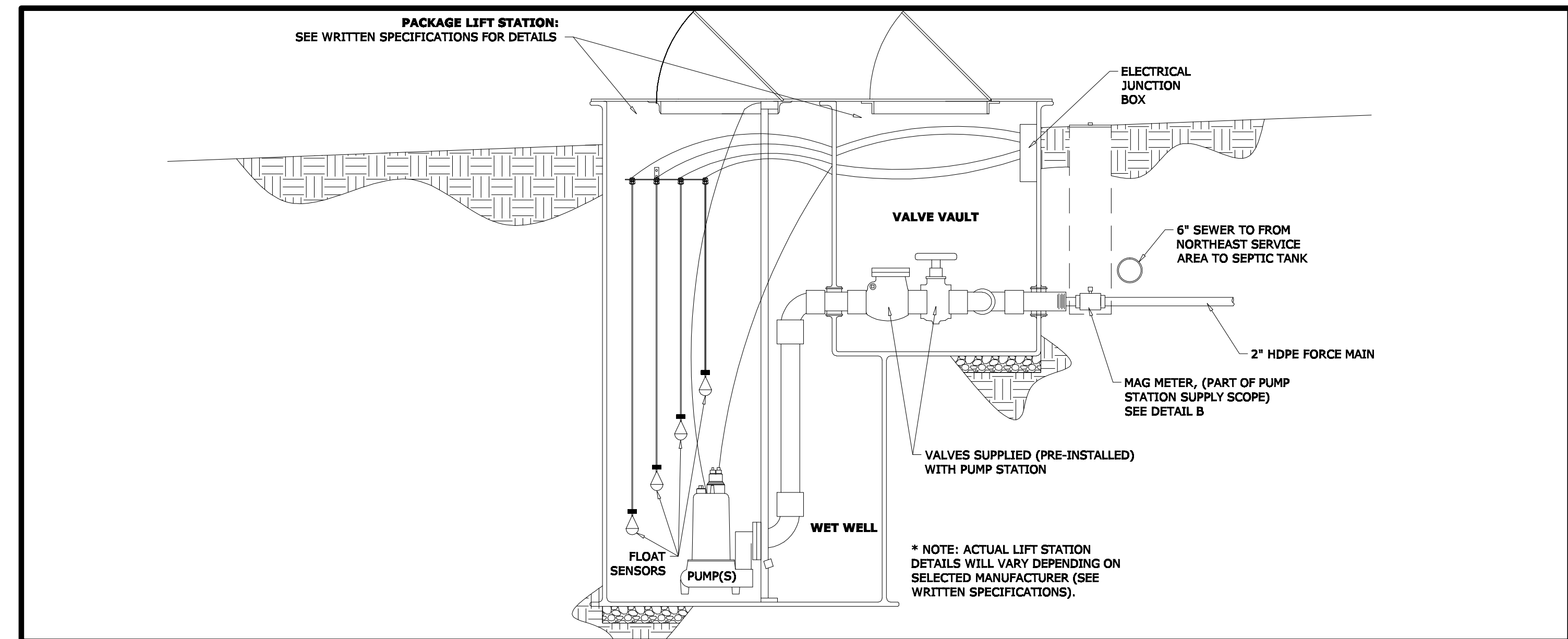
DETAIL C: MANHOLE COVER
SCALE: 1/2" = 2'



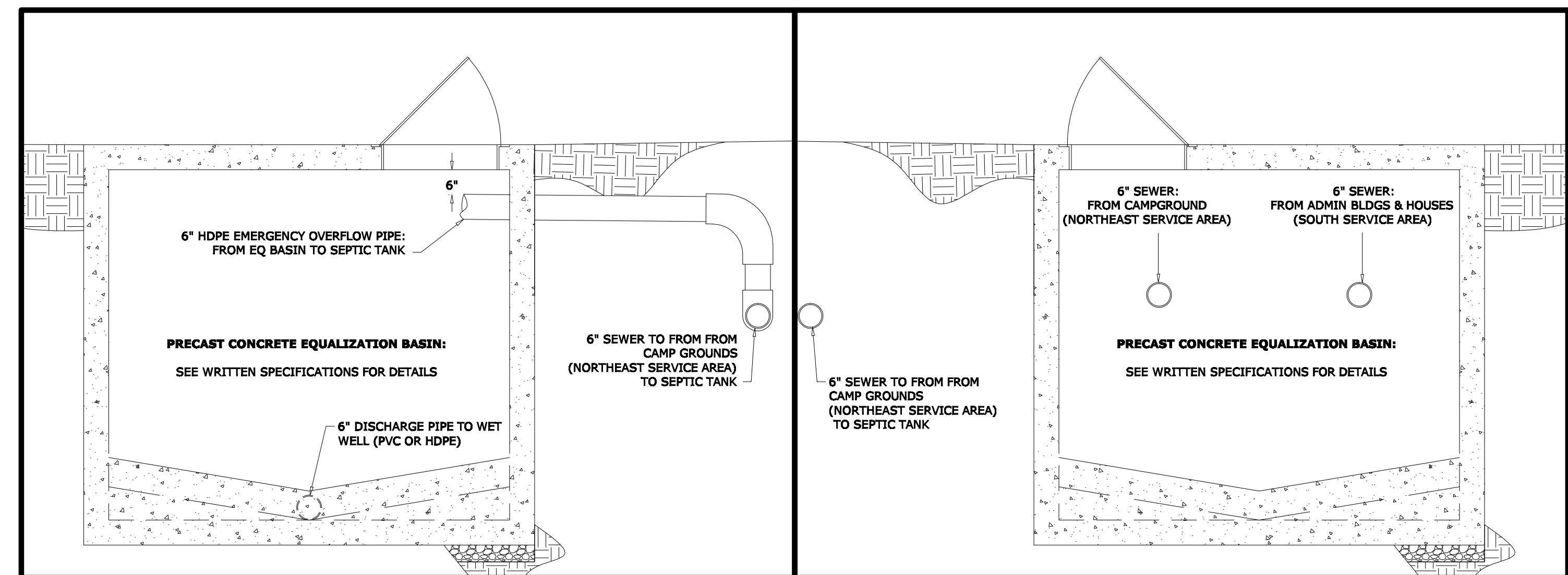
SECTION 1-1: WETWELL AND EQUALIZATION BASIN
SCALE: 1/2" = 1'



LIFT STATION PLAN
SCALE: 1/4" = 2'



SECTION 2-2: WET WELL
SCALE: 1/2" = 1'



SECTION 3-3: EQUALIZATION BASIN
SCALE: 1/2" = 1'

SECTION 4-4: EQUALIZATION BASIN
SCALE: 1/2" = 2'

NORTON ENGINEERING, LLC
ENGINEERING A BETTER WORLD
14 WEST FIRST STREET
DAYTON, OHIO 45402
PH: 937-223-5848 FAX: 937-424-5455
WWW.ENVIROMENTALENGINEERING.NET

LICENSED ENGINEER:
JOHN W. NORTON
PE # E-36962

CROSS-SECTIONS AND DETAILS

NORTHEAST OHIO CHURCH OF GOD
CAMPGROUND:
PROPOSED SANITARY LIFT STATION AND FORCE MAIN
16278 SHILLING RD
BERLIN CENTER, OHIO 44481

DRAWN BY: BMS
APPROVED BY: JWN
DATE: 7/15/2009
REVISED:

SCALE: VARIES
SHEET 4/5